

**BT5.2 BLE TRx Module**

**BM7701-00-1**

Revision: V1.00 Date: September 20, 2022

[www.bestmodulescorp.com](http://www.bestmodulescorp.com)

## Table of Contents

<b>Features .....</b>	<b>3</b>
<b>General Description.....</b>	<b>3</b>
<b>Selection Table.....</b>	<b>3</b>
<b>Pin Definition.....</b>	<b>4</b>
<b>D.C Characteristics.....</b>	<b>5</b>
<b>A.C Characteristics.....</b>	<b>5</b>
<b>Application Circuits.....</b>	<b>6</b>
<b>Module Dimension Drawing.....</b>	<b>6</b>

## Features

- Operating voltage: 2.0V~3.6V
- Operating current
  - ♦ Power down mode: 2 $\mu$ A
  - ♦ Broadcast mode: 765 $\mu$ A @ 100ms, 3V
  - ♦ Transparent transmission: 1mA @ 20 bytes, 5 times/sec, 3V
- RX sensitivity @ 25°C
  - ♦ 1Mbps: -94dBm (Typ.)
  - ♦ 2Mbps: -91dBm (Typ.)
- Frequency range: 2402MHz~2480MHz
- TX output power: +3.5dBm @ Max. power setting
- Modulation: GFSK
- Transmission distance: >100m @ +3.5dBm in open area
- Interface: 8 pins $\times$ 3 – pitch=1.27mm stamp hole
- Dimensions: 18mm(L) $\times$ 17mm(W)
- Operating temperature: -40°C~85°C

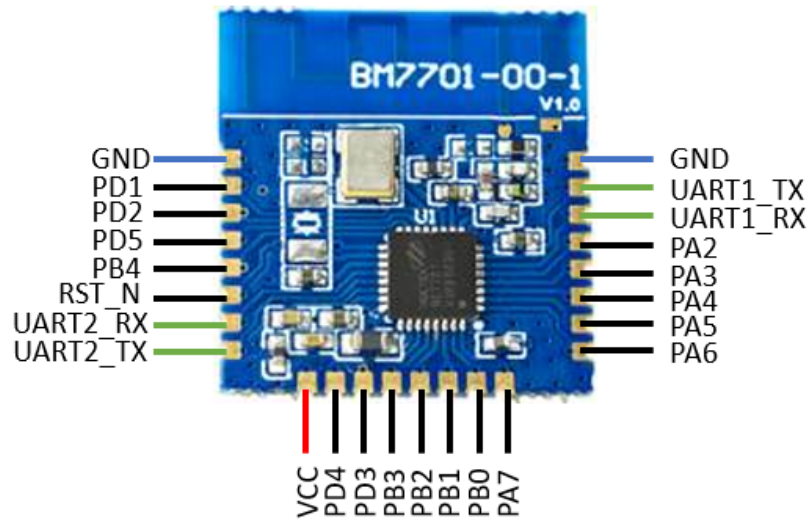
## General Description

The BM7701-00-1 is a BT5.2 Bluetooth Low Energy Transceiver module which is a design based on the BC7701 BLE transparent transmission device. More detailed information is described in the BC7701 datasheet. This module can wirelessly control external devices and supports bidirectional data transfer suitable for lighting products, health care products and home appliances

## Selection Table

Part NO.	Temperature	Interface
BM7701-00-1	-40°C~85°C	UART

## Pin Definition



Pin No.	Pin Name	Type	Function Description
1	GND	P	RF negative power supply, ground
2	PD1	I/O	General purpose I/O
3	PD2	I/O	General purpose I/O
4	PD5	I/O	General purpose I/O
5	PB4	I/O	General purpose I/O
6	RST_N	I	Hardware reset input, active low
7	UART2_RX	I	BLE controller interface
8	UART2_TX	O	BLE controller interface
9	VCC	P	RF positive power supply, 2.0V~3.6V
10	PD4	I/O	General purpose I/O
11	PD3	I/O	General purpose I/O
12	PB3	I/O	General purpose I/O
13	PB2	I/O	General purpose I/O
14	PB1	I/O	General purpose I/O
15	PB0	I/O	General purpose I/O
16	PA7	I/O	General purpose I/O
17	PA6	I/O	General purpose I/O
18	PA5	I/O	General purpose I/O
19	PA4	I/O	General purpose I/O
20	PA3	I/O	General purpose I/O
21	PA2	I/O	General purpose I/O
22	UART1_RX	I	BLE controller interface
23	UART1_TX	O	BLE controller interface
24	GND	P	RF negative power supply, ground

Legend: I=Input;

O=Output;

P=Power.

## D.C Characteristics

Ta=25°C, V<sub>CC</sub>=3.0V, f<sub>X<sub>TAL</sub></sub>=16MHz, TX Power=+3.5dBm

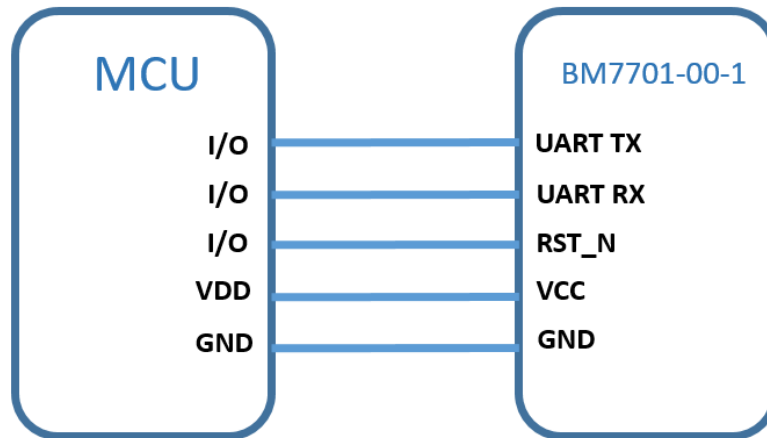
Symbol	Parameter	Conditions	Min.	Typ.	Max.	Unit
Ta	Operating Temperature	—	-40	—	85	°C
V <sub>CC</sub>	External Main Supply Voltage	—	2.0	—	3.6	V
<b>Current Consumption</b>						
I <sub>POR</sub>	Power-on Reset Current	—	—	780	—	μA
I <sub>ADV</sub>	Broadcast Current	ADVINTV=100ms, TX Power=+3.5dBm	—	765	—	μA
I <sub>CON</sub>	Connection Current	CONINTV=100ms	—	680	—	μA
I <sub>PD</sub>	Power down Current	—	—	2	—	μA
I <sub>TX</sub>	TX Current	TX Power=+0dBm	—	6.9	—	mA
I <sub>RX</sub>	RX Current	Data rate=1Mbps	—	8.6	—	mA

## A.C Characteristics

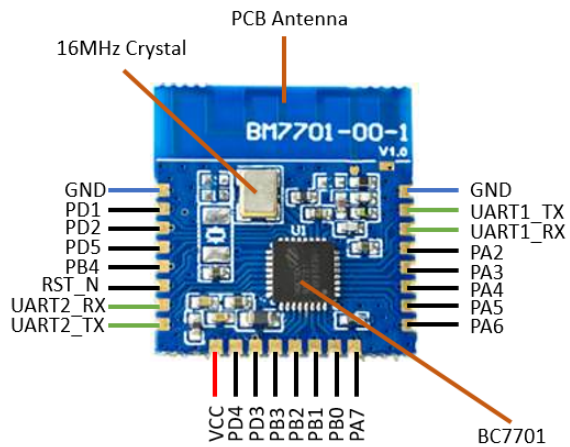
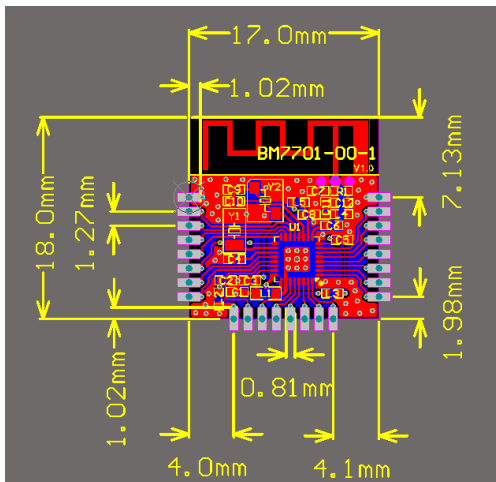
Ta=25°C

Symbol	Parameter	Min.	Typ.	Max.	Unit	
<b>RX Characteristics</b>						
C10	In-band Blocking	Co-channel Interference	—	7	—	dB
C11		Interfere at f <sub>OFFS</sub> =±1MHz	-9	—	-6	
C12		Interfere at f <sub>OFFS</sub> =±2MHz	—	-44	—	
C13		Interfere at f <sub>OFFS</sub> =±3MHz	—	-50	—	
C14		Interfere at f <sub>IMAGE</sub>	—	-25	—	
C15		Interfere at f <sub>IMAGE</sub> =±1MHz	—	-35	—	
Intermodulation	P <sub>in</sub> =-64dBm; P <sub>unwant</sub> =-50dBm; f <sub>0</sub> =2f <sub>1</sub> -f <sub>2</sub> , f <sub>2</sub> -f <sub>1</sub> =3/4/5MHz	-25	—	-22	dBm	
PSENS	Sensitivity @ 1Mbps	—	-94	—	dBm	
	Sensitivity @ 2Mbps	—	-91	—	dBm	
<b>TX Characteristics</b>						
P <sub>TX</sub>	Output Power	—	3.5	—	dBm	
P <sub>BW</sub>	Modulation 20dB Bandwidth	—	—	1	MHz	
PRF1	Out of Band Emission 2MHz	—	-20	—	dB	
PRF2	Out of Band Emission 3MHz	—	-58	—	dB	
Dev	Transmit FM Deviation	115	250	300	kHz	
Drift	Transmit Drift in any Position	—	—	400	Hz/μs	

### Application Circuits



### Module Dimension Drawing



Top View

Copyright© 2022 by BEST MODULES CORP. All Rights Reserved.

The information provided in this document has been produced with reasonable care and attention before publication, however, BEST MODULES does not guarantee that the information is completely accurate. The information contained in this publication is provided for reference only and may be superseded by updates. BEST MODULES disclaims any expressed, implied or statutory warranties, including but not limited to suitability for commercialization, satisfactory quality, specifications, characteristics, functions, fitness for a particular purpose, and non-infringement of any third-party's rights. BEST MODULES disclaims all liability arising from the information and its application. In addition, BEST MODULES does not recommend the use of BEST MODULES' products where there is a risk of personal hazard due to malfunction or other reasons. BEST MODULES hereby declares that it does not authorize the use of these products in life-saving, life-sustaining or safety critical components. Any use of BEST MODULES' products in life-saving/sustaining or safety applications is entirely at the buyer's risk, and the buyer agrees to defend, indemnify and hold BEST MODULES harmless from any damages, claims, suits, or expenses resulting from such use. The information provided in this document, including but not limited to the content, data, examples, materials, graphs, and trademarks, is the intellectual property of BEST MODULES (and its licensors, where applicable) and is protected by copyright law and other intellectual property laws. No license, express or implied, to any intellectual property right, is granted by BEST MODULES herein. BEST MODULES reserves the right to revise the information described in the document at any time without prior notice. For the latest information, please contact us.